

High-Performance Door

ASSA ABLOY RR300 Plus

ASSA ABLOY

ASSA ABLOY Entrance Systems

The global leader in
door opening solutions





AESTHETICS

Space saving design enables installation into door openings with restricted space.

COUNTERBALANCE

The door comes standard with a counterbalance. This enables manual activation.

KNOCK-OUT CAPABILITY

In the event of a collision the bottom profile breaks away, causing a sensor to stop the door. The door can then be easily reset by hand.

High-Performance Door **ASSA ABLOY RR300 Plus**

Advantages of the door

- Space saving design enables installation into door openings with restricted space.
- Door curtain is constructed with transparent PVC and reinforcement stripes. Chemical and puncture resistant RollTex® fabric is available for more demanding applications (optional).
- Integrated balancing systems allows for self opening.
- The door curtain is equipped with special wind tabs that travel in the side frame guides and give the door significant wind resistance.

Version ASSA ABLOY RR300 Plus F+R

The ASSA ABLOY RR300 Plus can be amended to a high performance door for escape and rescue routes to a max of 4000 x 4000 mm by adding special equipment. Monitoring devices such as a radar motion control, automatic self opening and a regular test run are features for this door type. (Temperature range +10°C – +30°C).

Design

Door Material

The door (side frame, top roll cover and bottom profile) is made from aluminium or stainless steel.

Door Curtain

The door comes standard with a transparent PVC curtain with blue reinforcement stripes. In situations, for example, where more leakage protection is necessary, durable curtains made of RollTex or Normatex are available. Silicone-free curtains are also available.

Windows

The curtains are available with or without windows as well as reinforcement stripes.

Drive Unit

The door is equipped with a gear motor, available on the left or right hand side.

Control System

The door comes standard with a relay control system MCS-R. Depending on the operational conditions, a contactor control system ACS 50 or a frequency converter control system MCS-FS and MCC are available. The powerful MCC frequency converter control system with Torque Vectoring of the drive unit, connected to the wide range of functions, enables nearly an unlimited use of the door. The MCC guarantees a soft start, optimal increase in speed, maximum speeds and a long service life of the door.

Actuators

Specific application may require additional safety devices. Actuators, such as infrared, radar detectors, push buttons, vehicle detector loops or radio transmitters can be added to the control system. Please contact us for more information regarding your specific needs.

Motor Cover and Top Roll Cover

A motor cover or top roll cover are optional door features. (Exceptions include F+R version)

Integrated Cable Chain

The door comes standard with an internal cable routing to the bottom profil.

Opening the Door

Manual activation: the door can be opened by manually releasing the brake on the balancing system. As an option the door can be equipped with a hand lever on both sides and/or with a automatic activation. The door opens automatically in the event of a power outage. In both cases the springs of the balancing system are released and the door opens to a maximum height of max. 2.0 m (depending on the size).

Bottom Profile / Flex Edge

The door comes standard with an aluminum bottom edge. An additional option is our bottom edge made of stainless steel is available. One further option is our Flex Edge Version (flexible bottom profile without aluminum extrusion and coiled cable).

Technical Data ASSA ABLOY RR300 Plus

TECHNICAL DATA	ASSA ABLOY RR300 Plus	ASSA ABLOY RR300 Plus F+R
Application	Interior door	Interior door
Door dimensions (mm) DW (min. / max.) LB DH (min. / max.) LH	1000 / 5000 mm 1000 / 5000 mm	1000 / 4000 mm 2300 / 4000 mm
max. area	25 m ²	16 m ²
Open/Close max. (m/s) ²⁾	2,2 / 0,9	2,2 / 0,9
Wind resistance (EN 12424)	class 1 (Exception „Flex-Edge“)	class 1 class 0 DH > 3500 mm
Leckage (EN 12426)	-	-
Space requirement top / side frame	400–515 / 123 und 123	400–515 / 123 und 123
Temperature range max. ³⁾	+10°C – +40°C	+10°C – +30°C
Surface material		
Side frame	✓ Anodized aluminum • Stainless steel • Powder coated	✓ Anodized aluminum • Stainless steel • Powder coated
Top roll cover ¹⁾	• Anodized aluminum 0° • Powder coated steel • Stainless steel 0° / 30°	✓ Anodized aluminum 0° • Powder coated steel • Stainless steel 0° / 30°
Motor cover ¹⁾²⁾	✓ Plastic Grau • Powder coated steel • Stainless steel 15°	✓ Plastic Grau • Powder coated steel • Stainless steel 15°
Bottom profile ²⁾	✓ Aluminium • Stainless steel • „Flex-Edge“ (max. 4x4,2m)	✓ Aluminium • Stainless steel
Bottom profile with extended flexible seal	•	•
Safety features		
Electrical safety contact edge	✓	✓
Power connection with drive unit		inside (at „Flex-Edge“ per radio)
Door line photocell in side frame	✓	✓
light curtain (integrated) ²⁾	• inside side frame	• inside side frame
Crash-System at curtain/bottom profile ²⁾	• Spiral cable or radio	• Spiral cable or radio
Curtain tension ²⁾	• Tension spring	• Tension spring
Emergency egress ²⁾	• Crank handle • Chain drive	-
Self opening in event of power outage	•	✓
Counterbalance	Spring force	Spring force
Suitable for emergency exit	no	yes
Brake type (Operation current- / fail-safe brake)	✓ Fail-safe • Operation current	✓ Operation current
Equipment ⁴⁾		
Lintel seal	-	-
Radar detector	•	✓
Drive unit		
Motor power	• MCS-R = GfA 0,65 kW; ✓ MCC/ACS50/MCS-FC = GfA 0,75 kW	GfA 0,75 kW
Chain drive (space saving) ²⁾	-	-
Gear heating	•	✓ • DH > 2600mm
Chain drive	•	-
Control system		
MCC: Open/Close max. (m/s) ²⁾	• 2,2 / 0,9	✓ 2,2 / 0,9 Special Programm
MCS-FC: Open/Close max. (m/s) ²⁾	• 1,7 / 0,8	-
MCS-R: Open/Close max. (m/s) ²⁾ (max. DW4000 × DH4200mm)	✓ 1,2 / 1,2 („Flex-Edge“ 3500×3500mm)	-
ACS 50: Open/Close max. (m/s) ²⁾ (max. DW4000 × DH4200mm)	✓ 1,2 / 1,2	-
Separate display / control	only at MCC	✓
Fuse protection by site		10 A (B-characteristic) (at 220/230V 16 A)
Control voltage	24 V DC	24 V DC
Protection	MCS = IP54 ACS50/MCC = IP55	MCC = IP55
Network connection		
MCC	Standard: With transformer:	3L(N)/PE/380/400/415/440/480V; 50/60Hz 1L(N)/PE: 220/230V 50-60Hz (25% red. speed/ only at F+R)
MCS-FC		1L(N)/PE/230; 50/60Hz
MCS-R		3/(N)/PE 400V; 50-60Hz
ACS 50	Standard: With transformer:	3L(N)/PE/230/380/400/415; 50/60Hz 3L(N)/PE/440/480/500V; 50/60Hz

• Option ✓ Standard – not possible



ASSA ABLOY control systems
With the basic control systems MCS-R and MCS-FS convenient operation with high flexibility, fast start-up and easy handling of the door is allowed.



Opening the door
The manual release handle enables the door to be opened easily. As an option, the door can be equipped with automatic activation.



Knock-out capability (Crash-System)
The door can be equipped with a knock-out capability option.

1) DH < 2 500 mm always with cover

2) Deviations possible depending on other properties

3) Depending on cycles/minute, door size and installation location. Extended temperature range on request.

4) Activator and traffic light see separate brochure



Example of use

Applications of the ASSA ABLOY RR300 Plus

- As an interior door for climate control
- For climate control and energy conservation
- In protected exterior applications
- In applications with strict hygiene requirements, the PVC curtain is easy to clean
- In distribution and warehouse applications

Safety features

The door has an electrical safety contact edge. A standard in-line photocell prevents the door from closing when an object is in the doorway. An optional integrated light curtain is available for doors with a minimum height of 1975 mm.

The door is designed according to the Workplace Directive of the UVV regulations and the harmonized CE Guidelines including the EN 13241-1.

Indication of risk

The safety of the door is designed for normal use and for vehicles in an industrial environment in accordance to the harmonized CE-Guidelines. In consideration of the on site situation – especially in case of pedestrian use – additional safety measures, such as additional actuators may be required. In addition, special environmental conditions may impact the choice of door type. For more information or to schedule an on-site inspection, please contact your local sales engineer.



ASSA ABLOY RR300 Plus Stainless steel F+R (escape route)

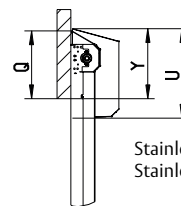
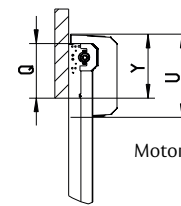
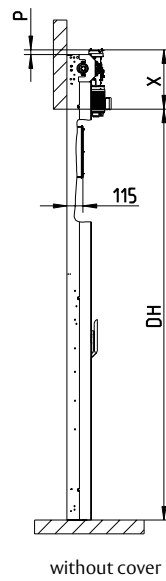
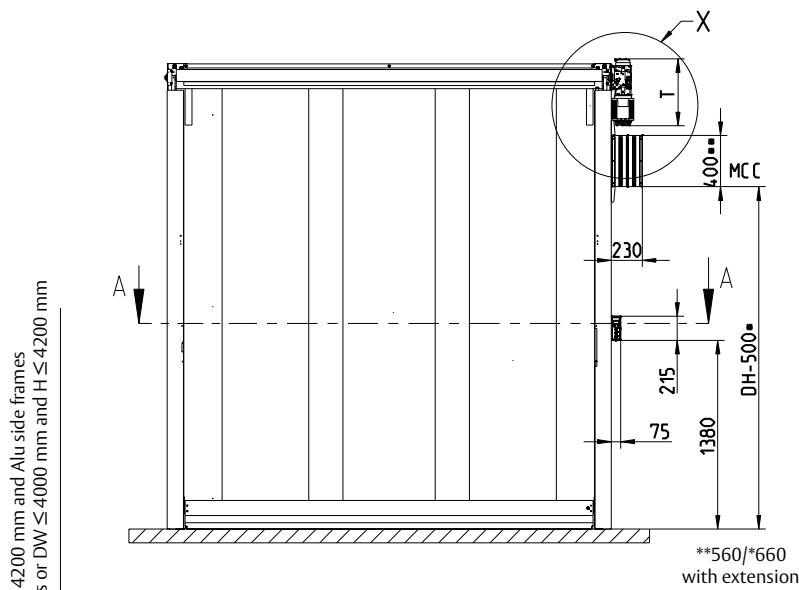
Door curtain (Color code according to RAL color card)	PVC with colored fabric reinforcement strips	PVC with colored fabric reinforcement strips silicone-free	RollTex® Plus RollTex® Original	NomaTex®	Top-Door curtain 1,3 mm (max. 3500 × 3500mm)
Windows	-	-	•	•	-
Vision panels	-	-	-	•	•
Wind tabs	✓	✓	✓	✓	✓
Blue	✓ 5002	✓ 5010	• 5002	• H 5005	• 5010
Red	✓ 3002	✓ 3002	-	• NA 3000	• 3002
Orange	• 2011	• 2011	• 2009	• H 2009	
Grey	• 7035	• 7037	• 7001	• 7038	• 7035
Yellow	• 1021	• 1021		• NA 1023	
Green	• 6018				
Beige	• 1014				
White	• 9016	• 9010			
Black		• 9005			

H = Smooth side on the front NA = not antistatic

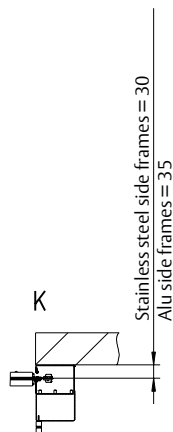
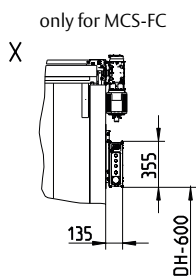
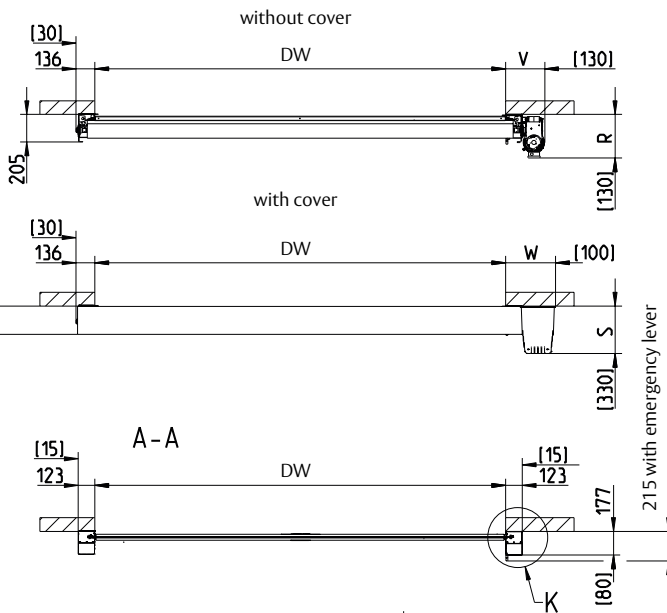


Example of use

General drawing ASSA ABLOY RR300 Plus



223 if DW > 4000 mm or DH > 4200 mm and Alu side frames
207 if Stainless steel side frames or DW ≤ 4000 mm and H ≤ 4200 mm



Available sizes			
		DW (B)	DH (H)
	min. (mm)*	1000	1000
	max. (mm)**	5000	5000
* Crash	min. (mm)	1300	1000
** with Top 1,3	max. (mm)	3500	3500
** with ACS 50 / MCS-R	max. (mm)	4000	4200
** with Flex Edge	max. (mm)	4000	4200
** with Flex Edge and MCS-R	max. (mm)	3500	3500

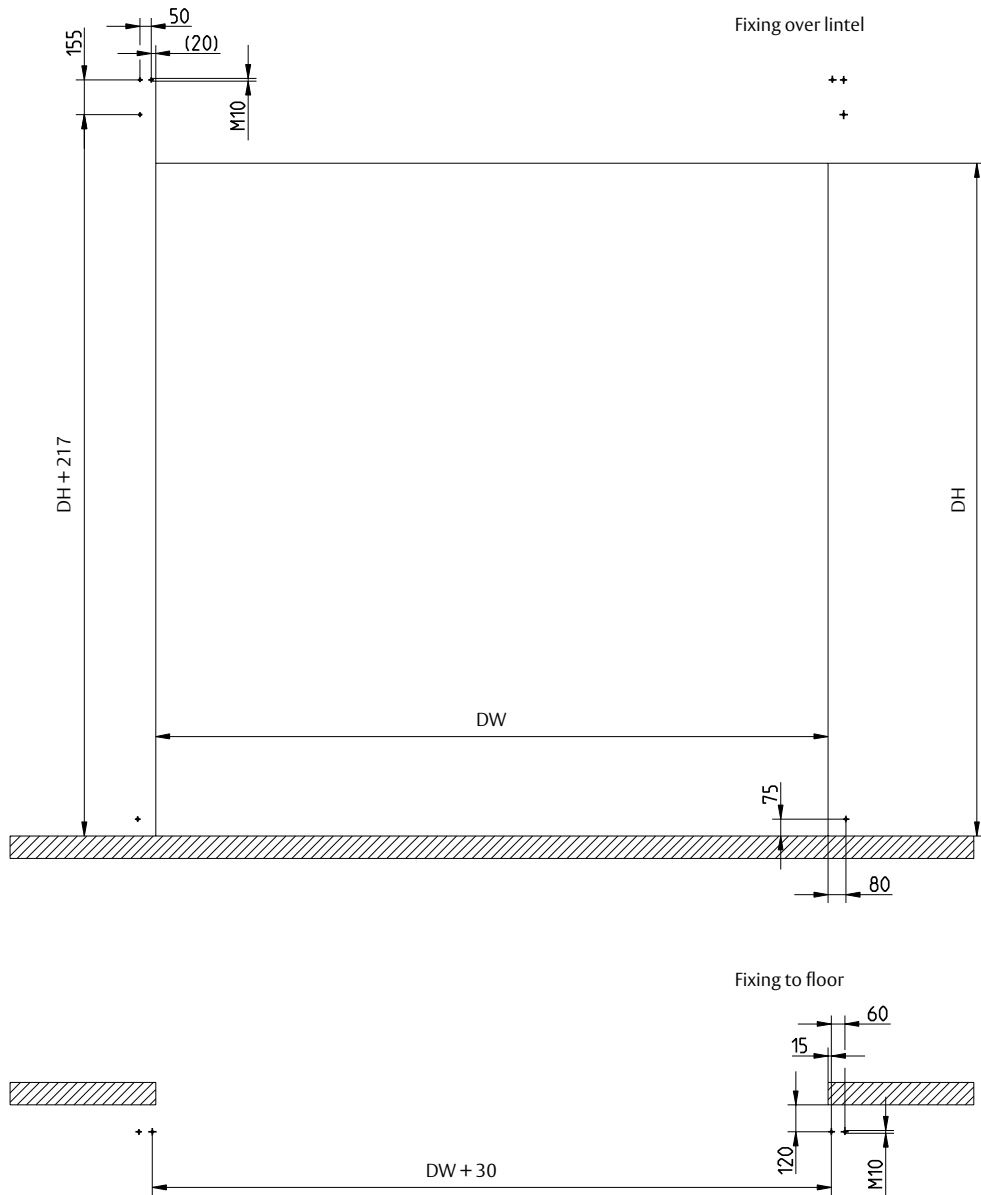
Without motor cover		
	ACS 50 / MCC / without control system / MCS-FC	MCS-R
X	443	398
V	285	245
R	315, if stainless steel side frames or DW ≤ 4000 and DH ≤ 4200	240
R	325, if DW > 4000 or DH > 4200 and Alu side frames	
T	500	415
P	45	0

With motor cover			
	Plastic	Steel	Stainless steel
Y	470	465	515
W	366	362	362
S	340	340	340
U	610	600	650
Q	400	400	497 (30°), 400 (0°)

Control Unit					
		ACS 50	MCC	MCS-FC	MCS-FC
Dimensions W × H × D	mm	300 × 400 × 210	220 × 380 × 100	215 × 345 × 140	215 × 345 × 140
Dimensions frequency converter W × H × D	mm			106 × 355 × 106	

[] = Space needed for installation

Fixing plan ASSA ABLOY RR300 Plus



ASSA ABLOY Entrance Systems is a leading supplier of entrance automation solutions for the efficient flow of goods and people. Building on the long-term success of the Besam, Crawford, Albany and Megadoor brands, we offer our solutions under the ASSA ABLOY brand. Our products and services are dedicated to satisfying end-user needs for safe, secure, convenient and sustainable operations.
ASSA ABLOY Entrance Systems is a division of ASSA ABLOY.

ASSA ABLOY

assaabloyentrance.com



ASSA ABLOY Entrance Systems

assaabloyentrance.com

Follow us:



Please enter ASSA ABLOY Entrance in the channel's search field.